

Call for papers

Special Issue on Italian Journal of Geosciences

INTEGRATING THE REFERENCE GEOLOGICAL MODEL (RGM) IN CIVIL ENGINEERING PROJECTS: APPROACHES AND APPLICATIONS

Topics

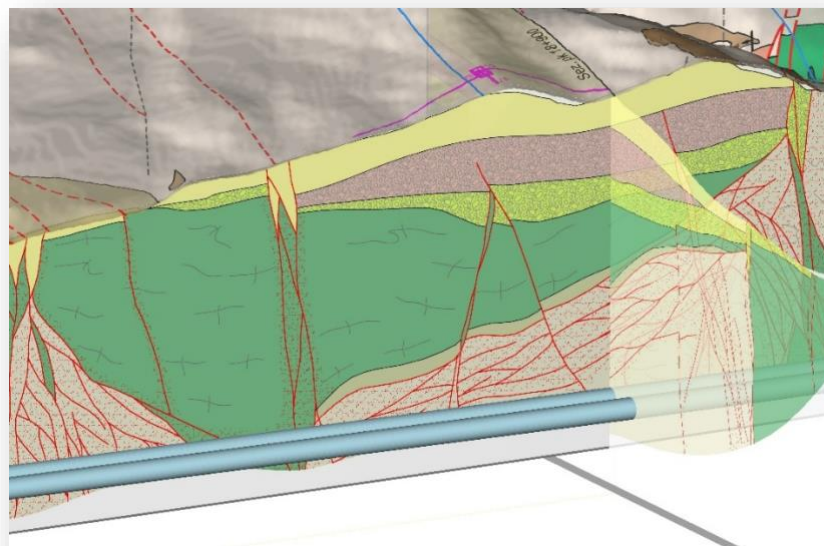
- Relevant case histories applied to civil engineering projects (tunnels, long bridges, dams, underground hydroelectric plants, large subsurface laboratories) or slope stabilisation projects where the RGM was a key aspect.
- Studies where accuracy and reliability of the RGM was crucial either in predicting risks deriving from weak/swelling rocks, active faults, cavities, high hydraulic heads or in hazard management.
- Case histories that involve a knowledge transfer from research to the applied sector, while outcomes from civil works contributed to improving overall geological knowledge.
- Critical review of RGM development within evolving legislative contexts and contract codes.
- Novel methods and approaches applied for the assessment of the RGM.

Timeline

Call for abstracts: 28/02/2026

Call for full papers: 31/07/2026

(to be sent to baietto@gdpconsultants.eu)



Guest editors

- **Alessandro Baietto** (GDP-GEOMIN srl);
- **Francesca Bozzano** (Sapienza Università di Roma);
- **Domenico Calcaterra** (Università di Napoli Federico II);
- **Gianluca Benedetti** (Italferr Spa, SO Geologia);
- **Paolo Perello** (GDP-GEOMIN srl)